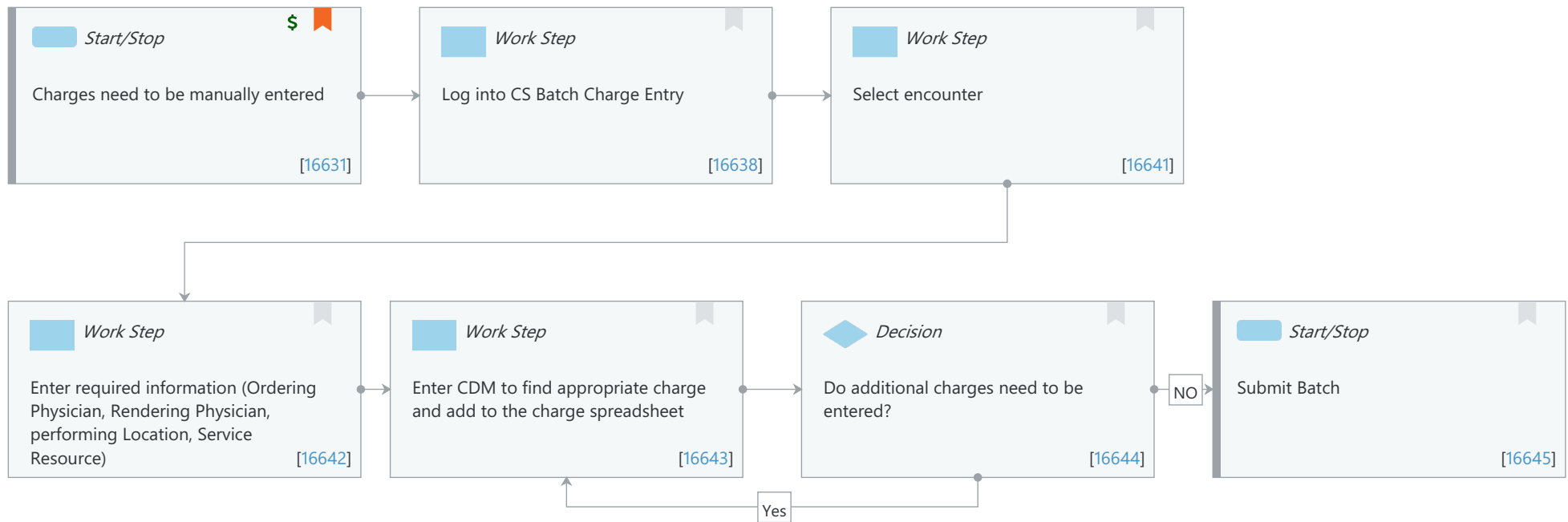


## Future State: Charge Services - Manual Charge Entry

Cerner Workflow ID: 121 (v. 12.0)

Client Workflow ID: 788

Last updated by ELPHIE MANGROBANG, Jul 09, 2024 9:06am (UTC -4 hours)



## Future State: Charge Services - Manual Charge Entry

Cerner Workflow ID: 121 (v. 12.0) Client Workflow ID: 788

Last updated by ELPHIE MANGROBANG, Jul 09, 2024 9:06am (UTC -4 hours)

**Workflow Details:**

Workflow Name: Charge Services - Manual Charge Entry

Workflow State: Future State

Workstream: Other

Venue: Acute Care

Post Acute

Ambulatory

Client Owner: MANGROBANG, ELPHIE

Cerner Owner: Craig, Terri D

Standard: Yes

Related Workflow(s):

Tags:

**Workflow Summary:**

Service Line:

Related Solution(s): Charge Services

Project Name: Niagara Health System:OPT-0297674:NIAG\_CD Niagara HIS RFP

TestBuilder Script(s):

Cerner Workflow ID: 121 (v. 12.0)

Client Workflow ID: 788

Workflow Notes: This workflow outlines the process of manually generating charges that were not captured as part of the clinical workflow.

This is a process

that occurs when there is not any opportunity to create charges as part of the clinical workflow. This need will be determined based on the overall design of the system and the solutions in place.

Application Experience

The reference build will have to be complete and the patient will have to be registered prior to this workflow being followed.

Process Alignment

## Future State: Charge Services - Manual Charge Entry

Cerner Workflow ID: 121 (v. 12.0) Client Workflow ID: 788

Last updated by ELPHIE MANGROBANG, Jul 09, 2024 9:06am (UTC -4 hours)

Billing activity will occur on charges by following this workflow.

### Guided Practice

This workflow should be very limited, as it deviates from the Clinically Driven Revenue Cycle.

A former Cerner executive spoke of the importance of a Clinically Driven Revenue Cycle. "When a healthcare organization has a clinically driven revenue cycle, it can create leverage across its IT infrastructure and revenue cycle operations. Having technology in place that makes revenue cycle a byproduct of clinical activity creates an opportunity to automate workflows that previously required human intervention."

### Outcomes Excellence

Not following this workflow could result in late charges and delayed claims.

Introduced By: WS 1

Validated By: WS 8

**Swim Lane: None**

Department(s):

Security Position(s):

### Start/Stop [16631]

Description: Charges need to be manually entered

Step Impact: Financial

### Work Step [16638]

Description: Log into CS Batch Charge Entry

### Work Step [16641]

Description: Select encounter

## Future State: Charge Services - Manual Charge Entry

Cerner Workflow ID: 121 (v. 12.0) Client Workflow ID: 788

Last updated by ELPHIE MANGROBANG, Jul 09, 2024 9:06am (UTC -4 hours)

**Work Step** [16642]

Description: Enter required information (Ordering Physician, Rendering Physician, performing Location, Service Resource)

**Work Step** [16643]

Description: Enter CDM to find appropriate charge and add to the charge spreadsheet

**Decision** [16644]

Description: Do additional charges need to be entered?

**Start/Stop** [16645]

Description: Submit Batch